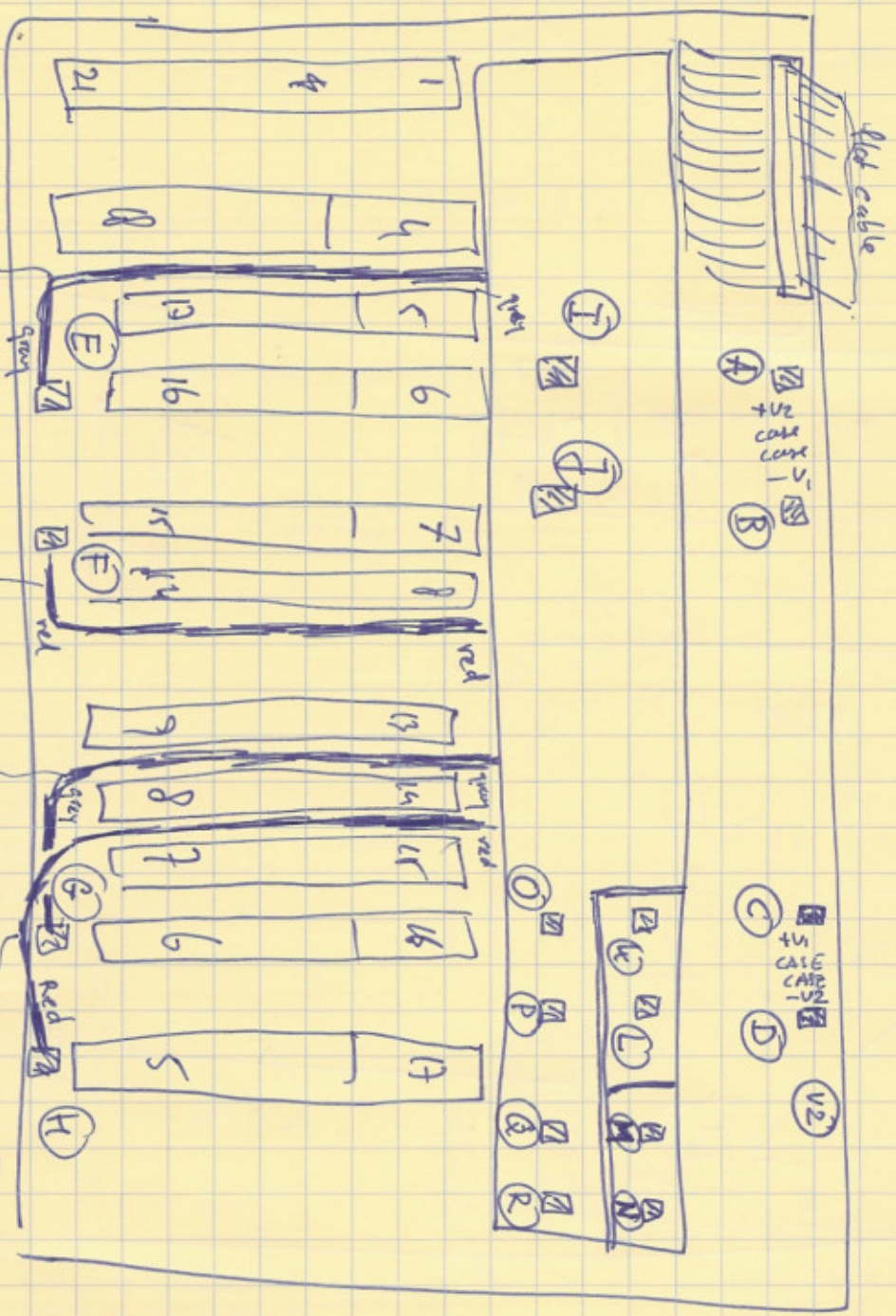


Power Bus



6U VME

circle: cable path to E

circle: cable path to F

circle: cable path to G

circle: cable path to H

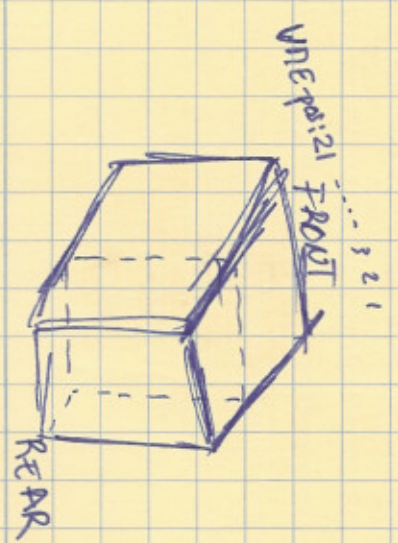
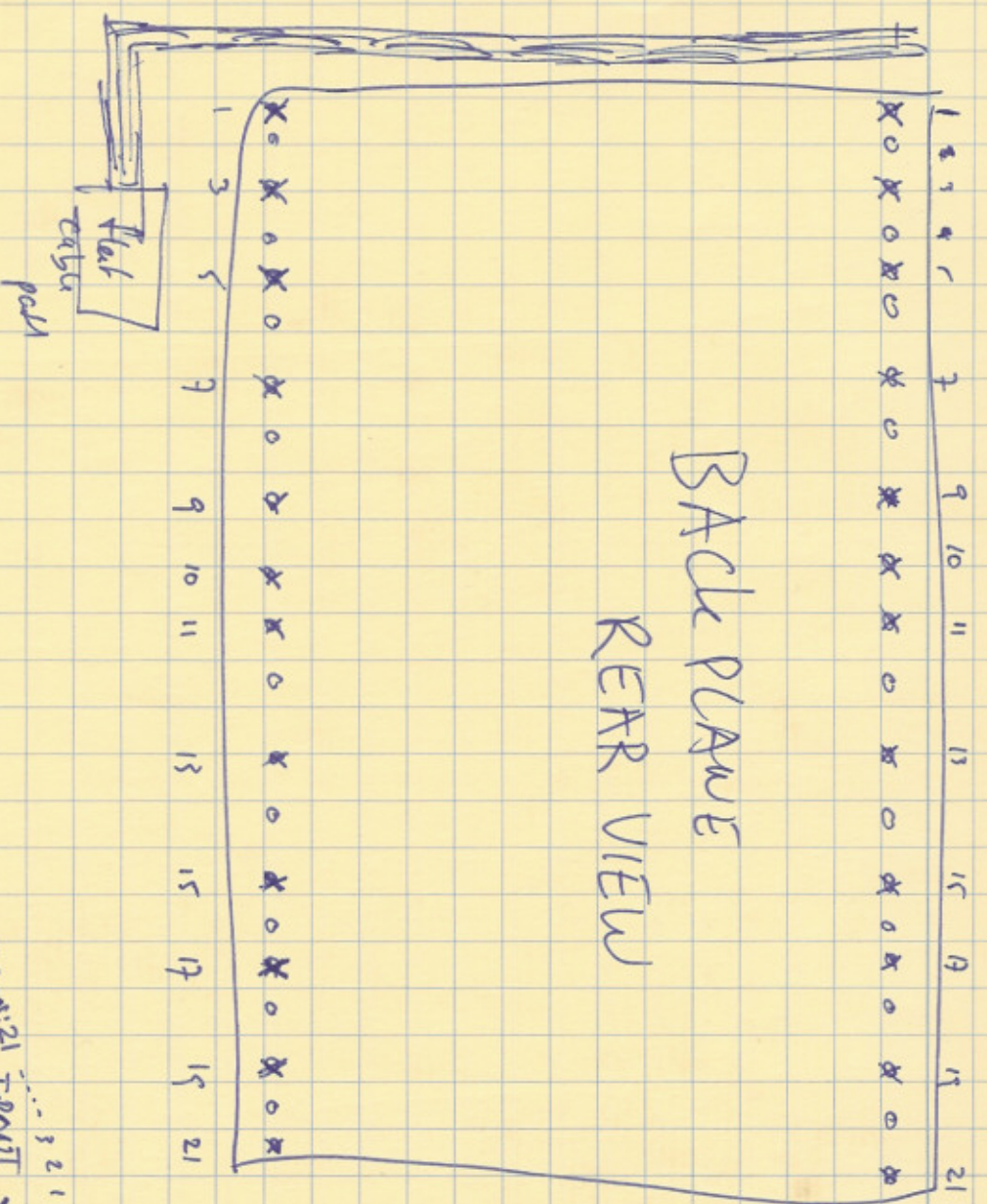
Color	From	To
RED	1	D
RED	2	B
RED	3	F
RED	4	H
N.C.*	5	N.C.*
WHITE	6	J
BLACK	7	A
BLACK	8	C
N.C.*	9	N.C.*
WHITE	10	I
GREY	11	E
GREY	12	G
WHITE	13	K
	14	L
	15	M
	16	N
	17	O
	18	P
	19	Q
WHITE	20	R

*N.C. NOT CONNECTED

Fg. Jan 17, 2008

OR Key notes

BACK PLANE REAR VIEW



numbering scheme: from left to right.
 VME Slot #1 is at hole 21
 VME Slot #2 is at hole 20
 etc.
 VME Slot #21 is at hole #1

F-9. Jan 11, 2005 -