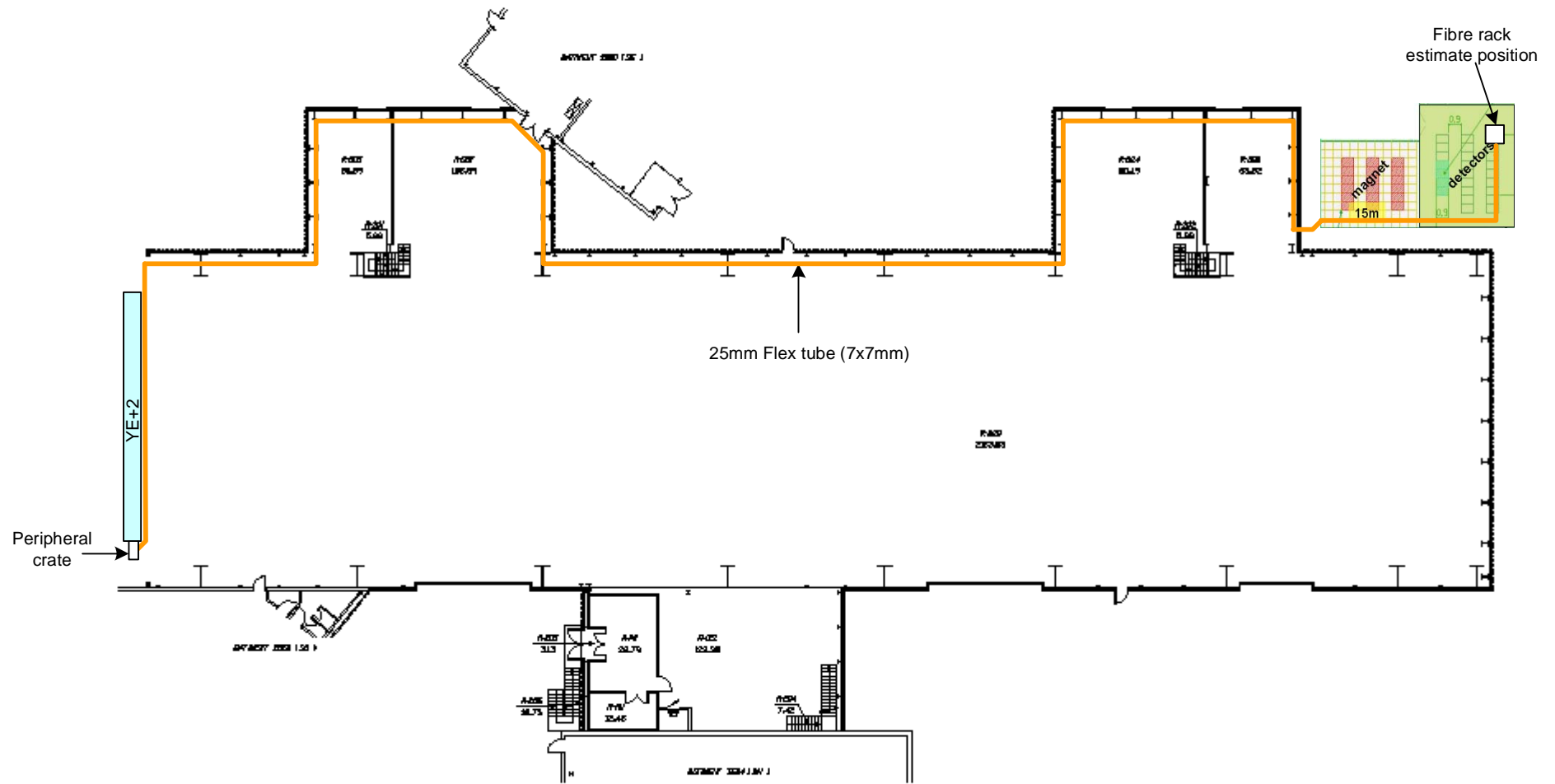
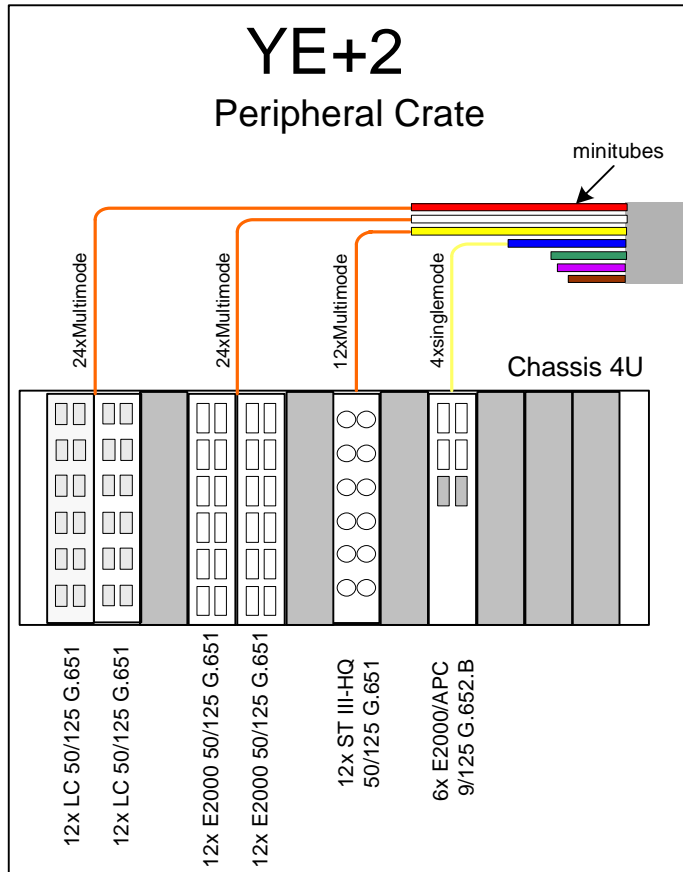


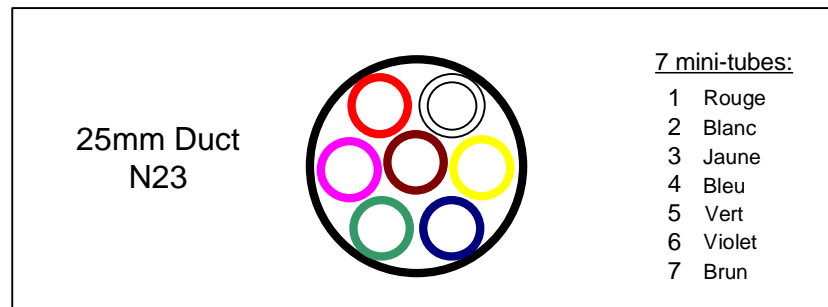
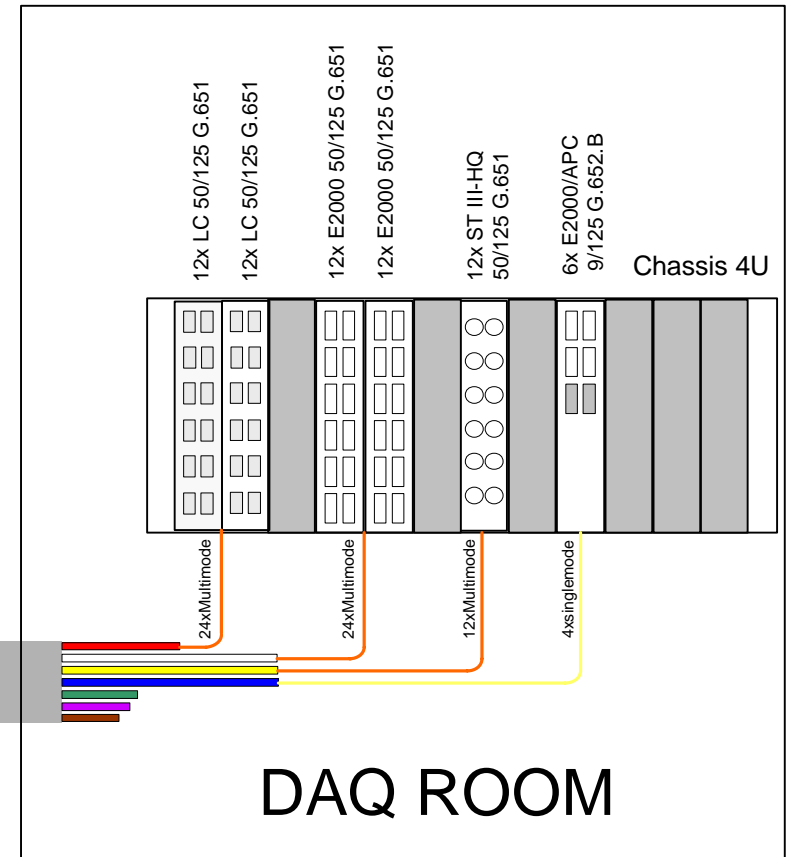
CMS EMU SLICE TEST



CMS / EMU SLICE TEST



25mm Duct N23 (7x7mm)



valide		0%	Commande		
Pos.	Désignation	Description du travail	Qt	Prix CERN	Total CERN
titre		CMS EMU SLICE TEST		SFr. -	SFr. -
none	none		0.000	SFr. -	SFr. -
none	none		0	SFr. -	SFr. -
XF0160	#Ø 25 mm corrugated duct with 7 mini tubes Ø 7 mm		0.175	SFr. 3'626.30	SFr. 634.60
XF0030	#connector piece for minitube		14.000	SFr. 1.90	SFr. 26.60
XF0060	#connector piece for Ø 25 mm for corrugated duct		1.000	SFr. 10.36	SFr. 10.36
XF0680	#19 " 3U chassis with 1U guide channel		2.000	SFr. 86.95	SFr. 173.90
XF0320	installation of Ø 25 mm in experimental areas surface		0.175	SFr. 3'972.60	SFr. 695.21
XF0690	# module 6 sm E-2000/APC 9/125 G.652.B		2.000	SFr. 248.60	SFr. 497.20
XF0760	# module 12 mm ST III-HQ 50/125 G.651		2.000	SFr. 284.70	SFr. 569.40
XF0770	# module 12 mm LC 50/125 G.651 duplex mounting		4.000	SFr. 342.20	SFr. 1'368.80
XF0711	Fibre terminatiuon unit - CMS - #module 12 mm E-2000 50/125		4	SFr. 569.70	SFr. 2'278.80
XF0570	mini optical cables of 24 mm G.651 50/125		0.37	SFr. 3'457.20	SFr. 1'279.16
XF0560	mini optical cables of 12 mm G.651 50/125		0.185	SFr. 2'063.60	SFr. 381.77
XF0580	mini optical cables of 4 sm G.652.B 9/125		0.185	SFr. 739.10	SFr. 136.73
XF0660	#blowing of mini cables in galleries, buildings, shafts and tunnels (4 to 24 fibres)		0.74	SFr. 1'160.70	SFr. 858.92
XF0910	#fibre termination (2 ends) including test and measurement report this post must include all		64	SFr. 45.60	SFr. 2'918.40
XF0471	Manhours Crafstman for installation of ducts		4	SFr. 112.50	SFr. 450.00
XF1080	Patchcord duplex LC - LC 50/125 G.651 length 2m		24.000	SFr. 35.70	SFr. 856.80
XF1011	Patchcord duplex E2000 - LC 50/125 G.651 2m		24	SFr. 52.47	SFr. 1'259.28
XF0960	Patchcord simplex ST-HQ - LC 50/125 G.651 2m		24.000	SFr. 14.34	SFr. 344.16
XF0995	Patchcord duplex E2000/APC - ST-HQ 9/125 G.652.B 2m		4	SFr. 49.33	SFr. 197.32
				SFr.	14'937.41