

Operation with EMU-DCS in Green Barrack.

Level 2: Starting the CMS_CSC project:

As this is not the user interface it makes sense to start it using a not public X-server of the pcmsad02 machine (Green Barrack windows desktop PC).

As described in the document: DCS_MTCC_L3.doc the X-window on pcmsad02 machine is opened to be used for this purpose: so in this X-window please issue the following commands:

1.1) ssh -l fast emudcs

User: fast

Pass: UFdqm_04

```
export DISPLAY=pcmsad02:0.0
```

```
emudcs_start
```

*shortly after start you will see three popped up grey windows (like in **fig.1**). Please close all of them by clicking the “Close” buttons*

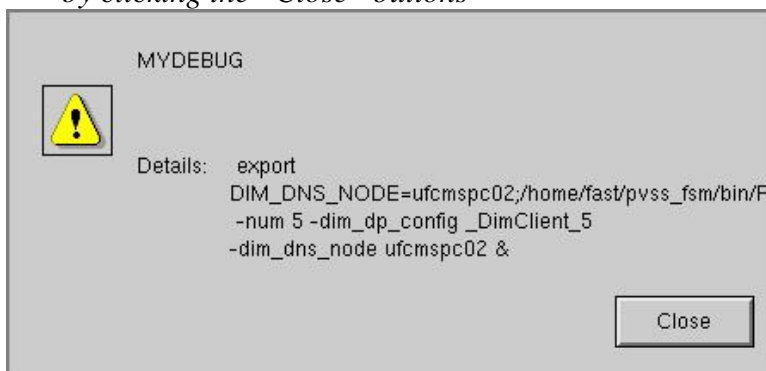


Fig.1

Now wait until the grey window

“START IS COMPLETE

YOU CAN OPERATE” (fig.2) is displayed (in ~ 5 minutes !!!)

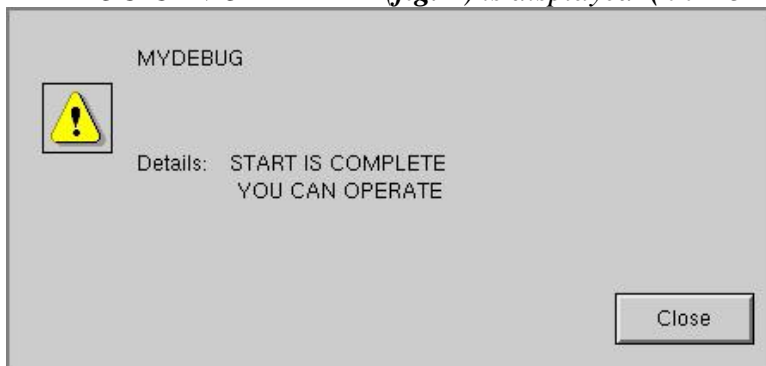


Fig.2

Identify the window “Device Editor & Navigator” (**fig.3**)

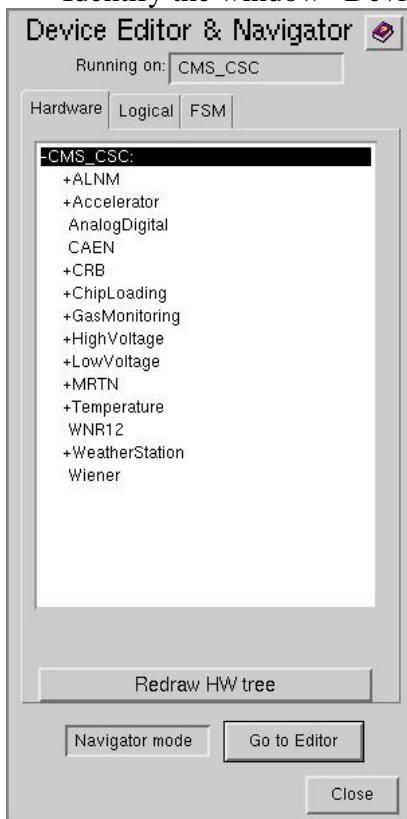


Fig.3

Click FSM tab of the window “Device Editor & Navigator” (**fig.4**)

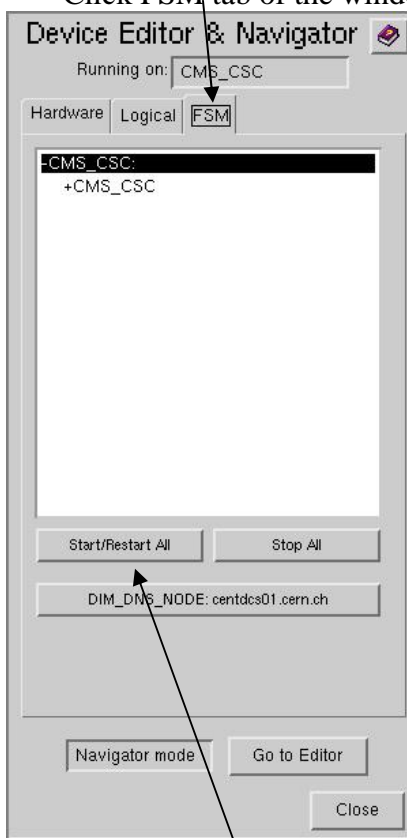


Fig.4

Click “Start/Restart All” and wait until the new popped up window “Please wait – All Domains Starting Up ... ” is closed

Click the +CMS_CSC
so that the +CMS_CSC is highlighted like shown in **fig.5**

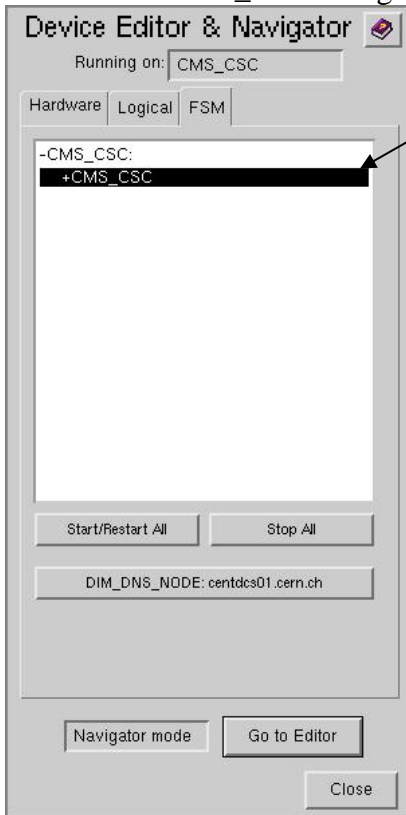


Fig.5

Right click the +CMS_CSC to display the vertical pop-up menu: (**fig.6**)

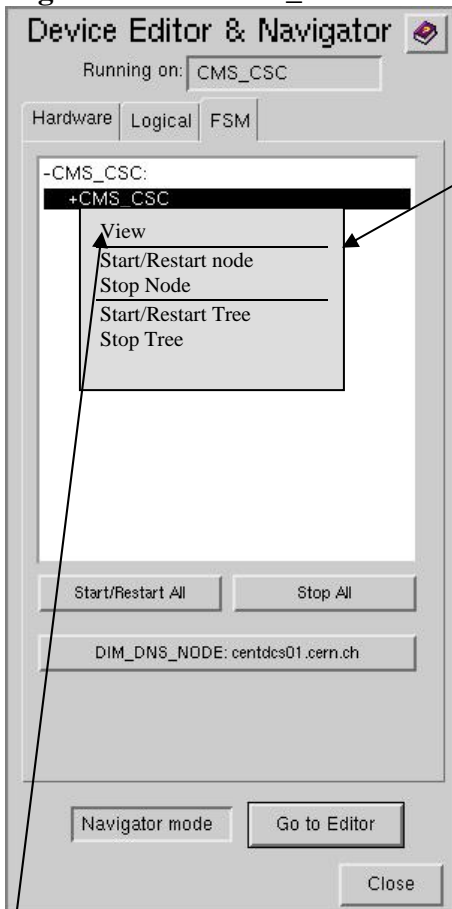


Fig.6

Select the “View” and click on it to display the window shown in **fig.7a**

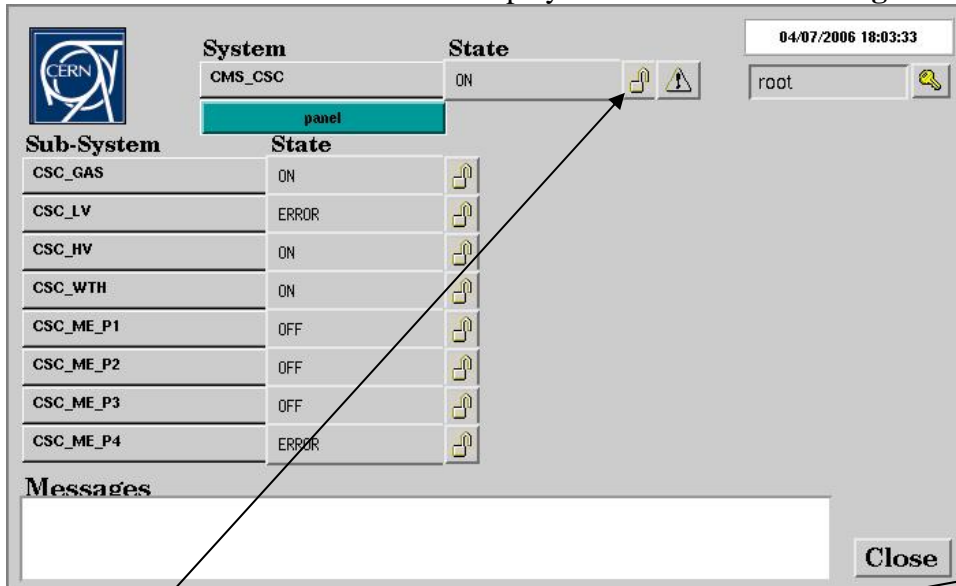


Fig.7a



Fig.7b

Click “Lock” icon to display the “Modes” window like shown in **fig.7b**

Click “Take” button

And wait the “Modes” window to disappear. Close all popped-up windows with “Close” button.

(that my take up to ~ 2 minutes! Do not click the window Fig.7a until the “Modes” is displayed)

You will see a display like shown in **fig8**:

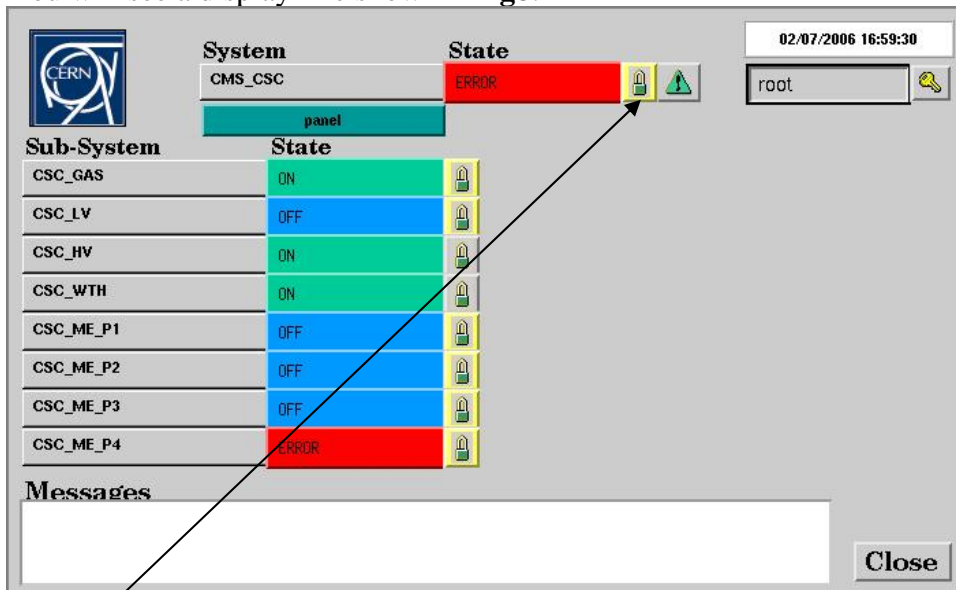


Fig.8

Click “Lock” icon to display the “Modes” window like shown in **fig.9**

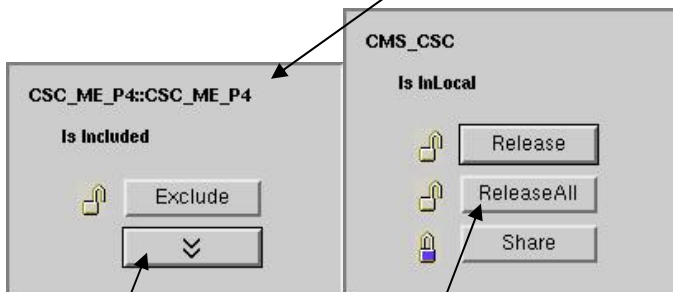


Fig.9

Click “>>” and then the “Release All” button

And wait the “Modes” window to disappear. The final display should be looked as in **fig.7a**